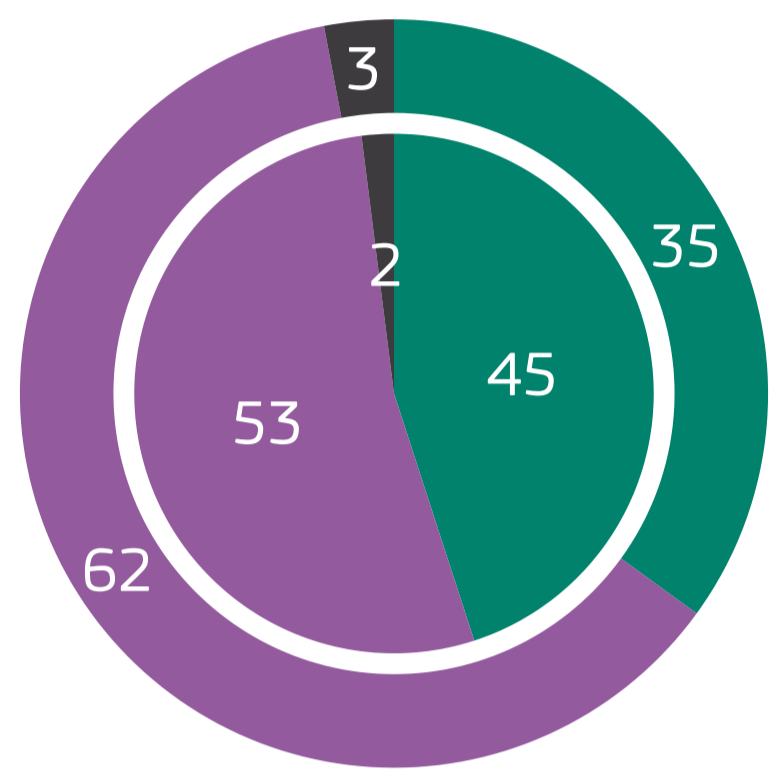


## 1. LIFE IN THE EUROPEAN UNION

**QA1.2. How would you judge the current situation in each of the following? :-The situation of (NATIONALITY) economy (%)**



● Total 'Good' ● Total 'Bad' ● Don't know

EU27 Outer Pie

SE Inner Pie

|              | EU27 | Change | SE | Change |
|--------------|------|--------|----|--------|
| Total 'Good' | 35   | ▼5     | 45 | ▼7     |
| Total 'Bad'  | 62   | ▲4     | 53 | ▲9     |
| Don't know   | 3    | ▲1     | 2  | ▼2     |

▲▼ (ST100 Oct/Nov 2023 - ST99 May/June 2023)

**QA1. How would you judge the current situation in each of the following? (%)**

### The financial situation of your household



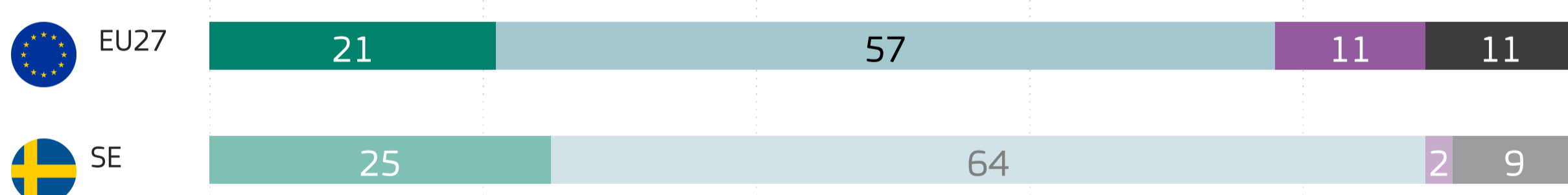
### Your personal job situation



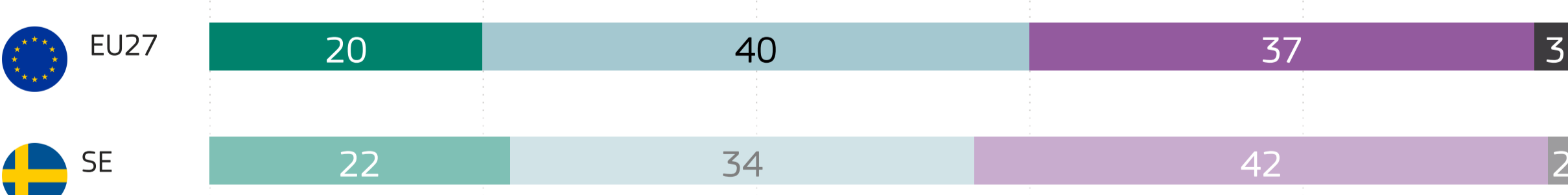
● Total 'Good' ● Total 'Bad' ● Don't know

**QA2. What are your expectations for the next 12 months: will the next 12 months be better, worse or the same, when it comes to...? (%)**

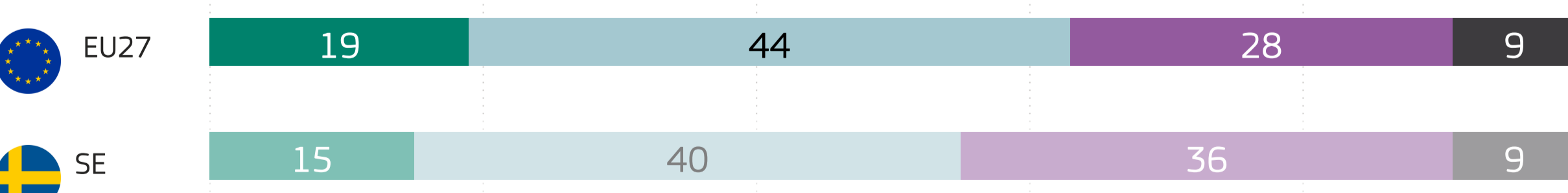
### Your personal job situation



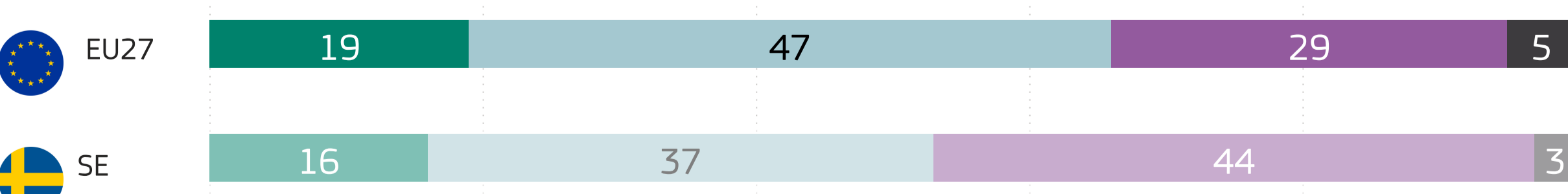
### The state of (OUR COUNTRY)'s economy



### The economic situation in the EU



### The employment situation in (OUR COUNTRY)



● Better ● The same ● Worse ● Don't know

**QA2.3. What are your expectations for the next 12 months: will the next 12 months be better, worse or the same, when it comes to...? :-The state of (OUR COUNTRY)'s economy (%)**

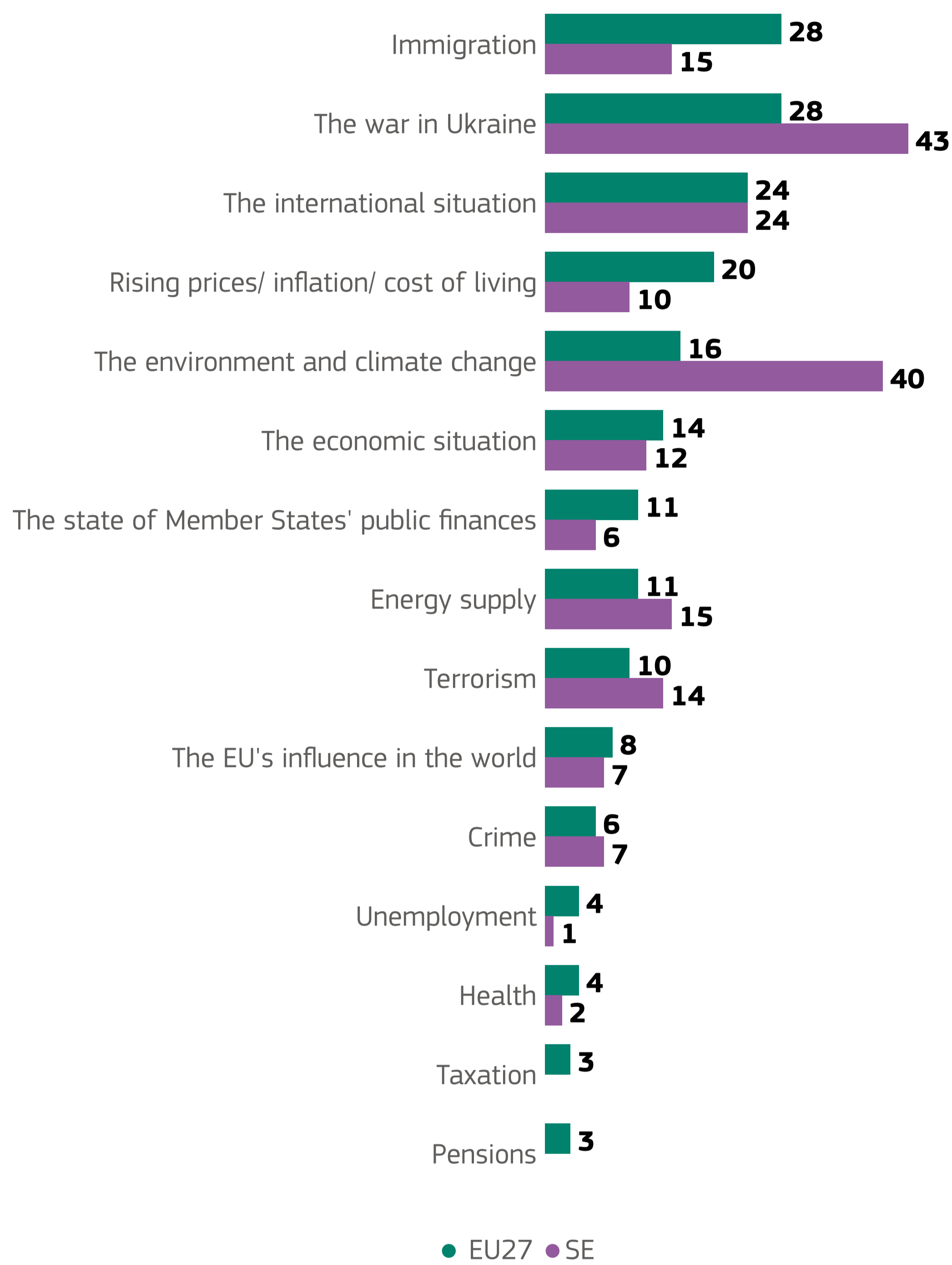
|            | EU27 | Change | SE | Change |
|------------|------|--------|----|--------|
| Better     | 20   | ▼1     | 22 | ▼2     |
| The same   | 40   | ▲1     | 34 | ▼1     |
| Worse      | 37   | ▲1     | 42 | ▲4     |
| Don't know | 3    | ▼1     | 2  | ▼1     |

▲▼ (ST100 Oct/Nov 2023 - ST99 May/June 2023)

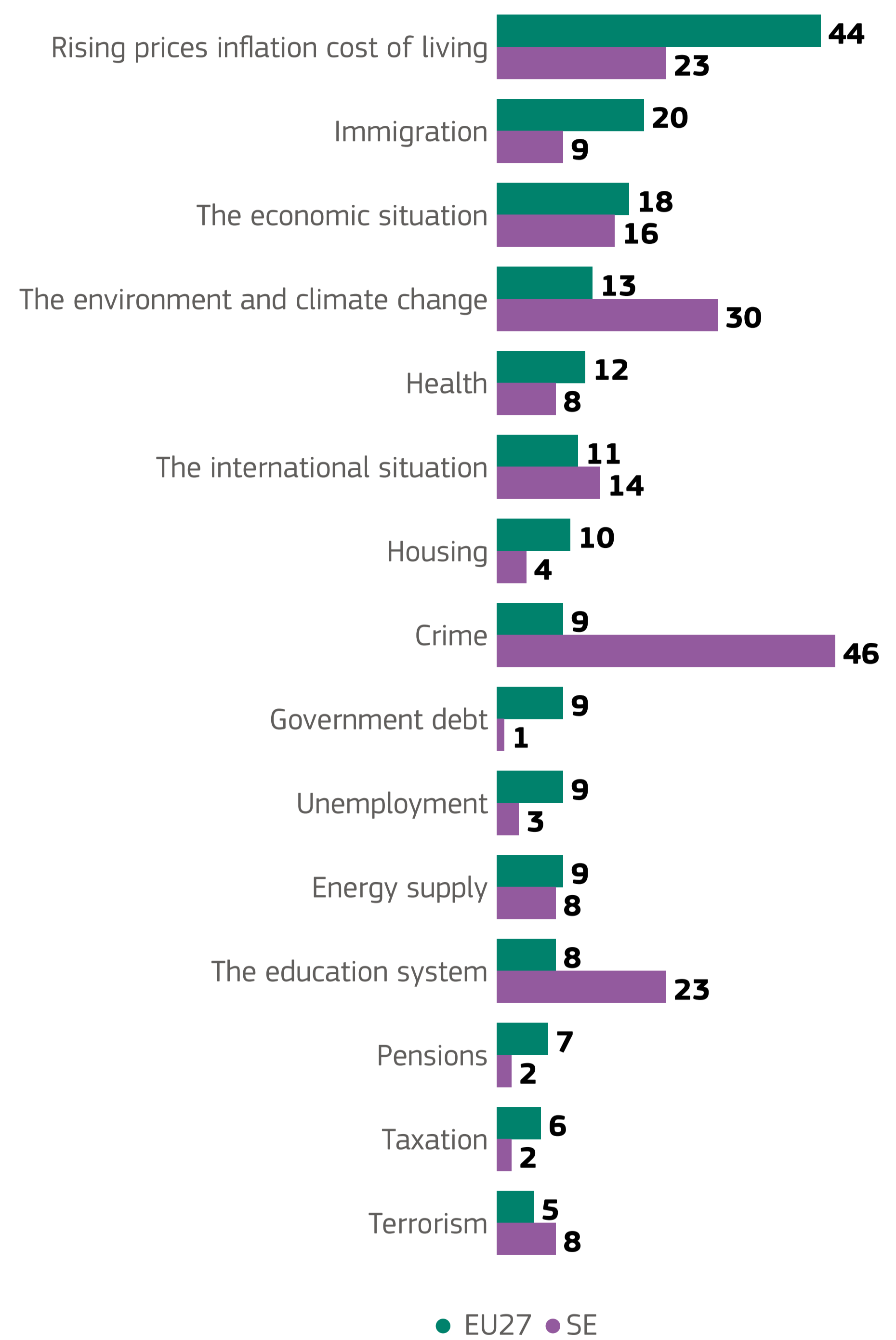


# 1. LIFE IN THE EUROPEAN UNION

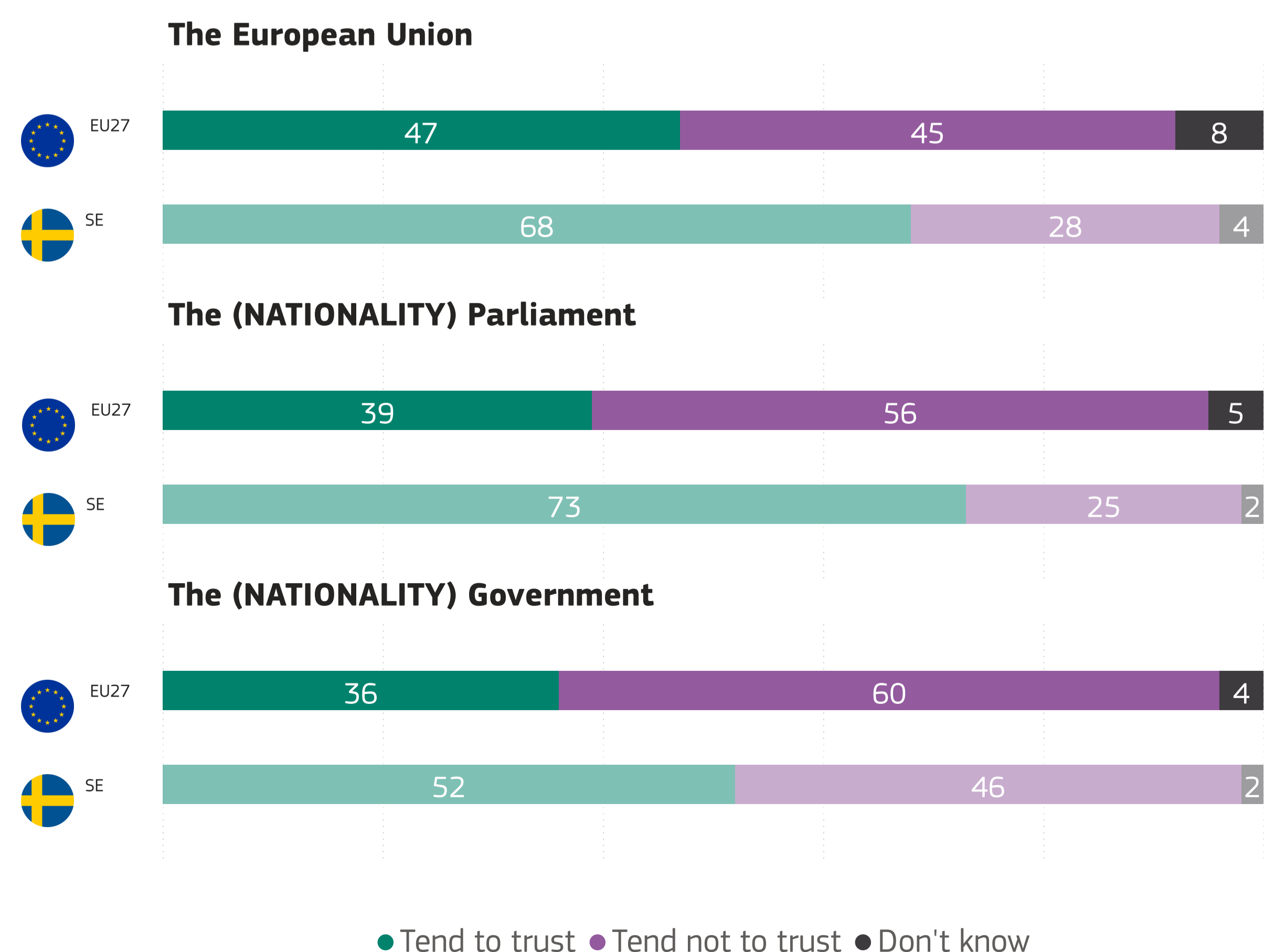
QA5. What do you think are the two most important issues facing the EU at the moment? (MAX. 2 ANSWERS) (%)



QA3. What do you think are the two most important issues facing (OUR COUNTRY) at the moment? (MAX. 2 ANSWERS) (%)



QA6. How much trust do you have in certain institutions? For each of the following institutions, do you tend to trust it or tend not to trust it? (%)



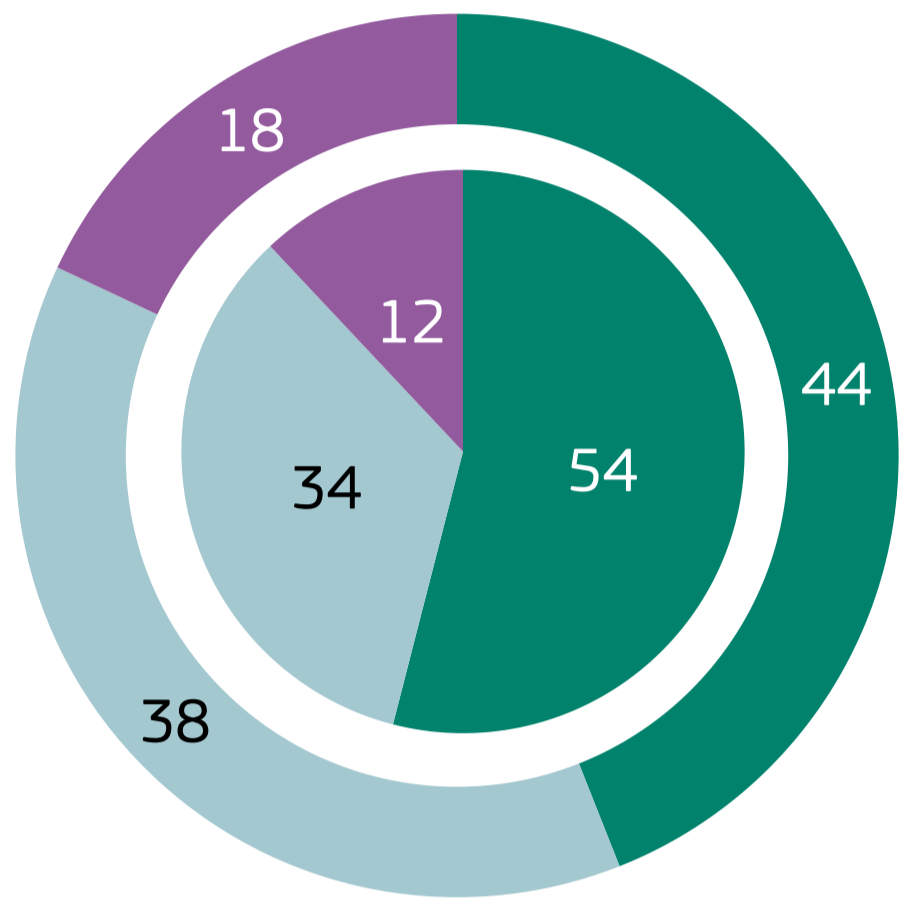
QA6.4. How much trust do you have in certain institutions? For each of the following institutions, do you tend to trust it or tend not to trust it? :-The European Union (%)

|                   | EU27 (%) | SE (%) | Change |
|-------------------|----------|--------|--------|
| Tend to trust     | 47       | 68     | ▲1     |
| Tend not to trust | 45       | 28     | ▲1     |
| Don't know        | 8        | 4      | ▼2     |

▲▼ (ST100 Oct/Nov 2023 - ST99 May/June 2023)

# 1. LIFE IN THE EUROPEAN UNION

**D78. In general, does the EU conjure up for you a very positive, fairly positive, neutral, fairly negative or very negative image? (%)**



● Total 'Positive' ● Neutral ● Total 'Negative' ● Don't know

EU27 Outer Pie

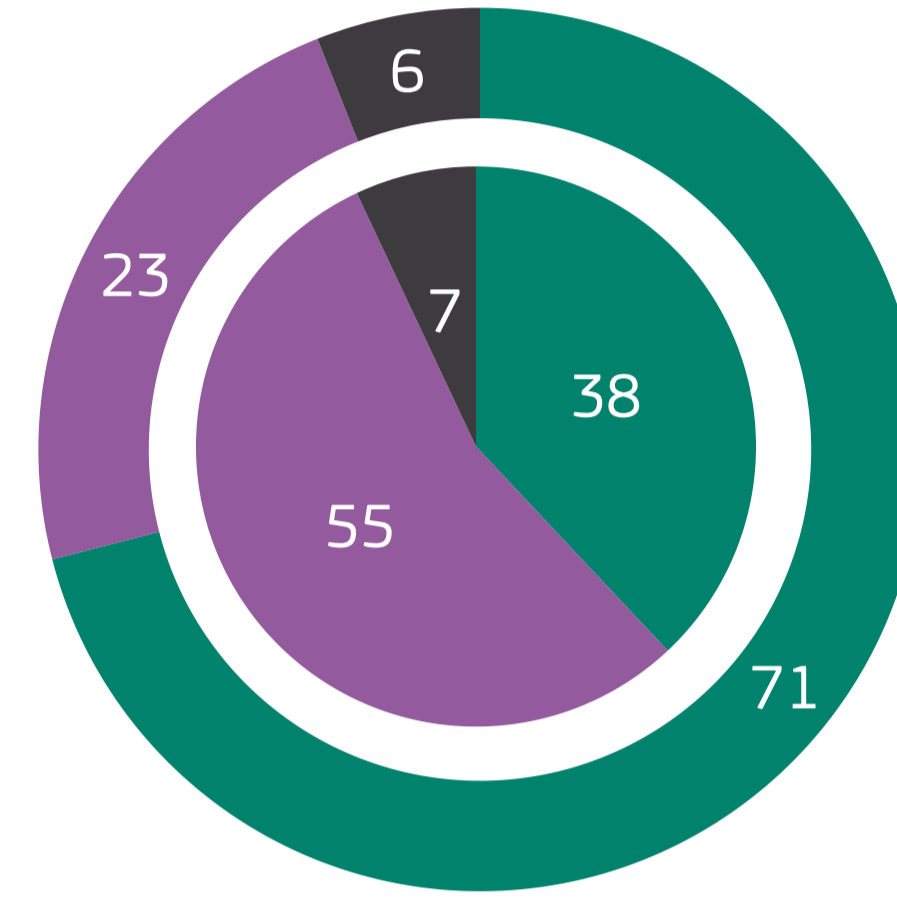
SE Inner Pie

|                  |    |    |    |    |
|------------------|----|----|----|----|
| Total 'Positive' | 44 | ▼1 | 54 | ▼4 |
| Neutral          | 38 | ▲1 | 34 | ▲4 |
| Total 'Negative' | 18 | =  | 12 | =  |

▲▼ (ST100 Oct/Nov 2023 - ST99 May/June 2023)

# 2. KEY POLICY AREAS

**QB3.1. What is your opinion on each of the following statements? Please tell for each statement, whether you are for it or against it. :-A European economic and monetary union with one single currency, the euro (%)**



● For ● Against ● Refusal (SPONTANEOUS)/ Don't know

EU27 Outer Pie

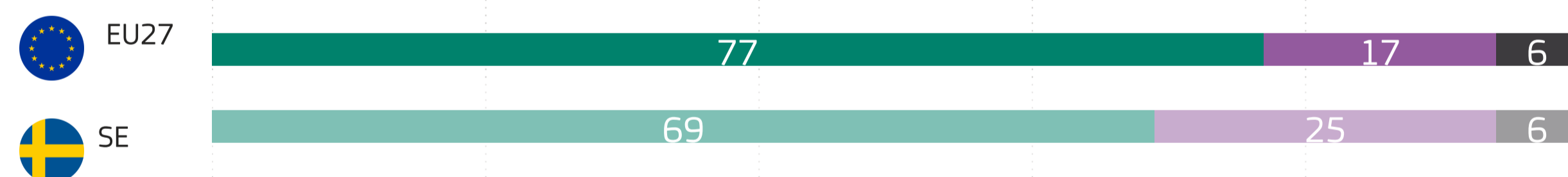
SE Inner Pie

|                                   |    |   |    |    |
|-----------------------------------|----|---|----|----|
| For                               | 71 | = | 38 | =  |
| Against                           | 23 | = | 55 | ▼1 |
| Refusal (SPONTANEOUS)/ Don't know | 6  | = | 7  | ▲1 |

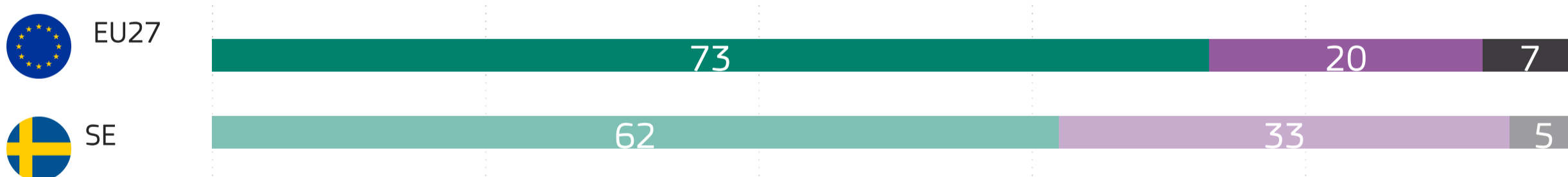
▲▼ (ST100 Oct/Nov 2023 - ST99 May/June 2023)

**QB2. What is your opinion on each of the following statements? Please tell for each statement, whether you are for it or against it. (%)**

## A common defence and security policy among EU Member States



## A common energy policy among EU Member States



## A common foreign policy of the Member States of the EU



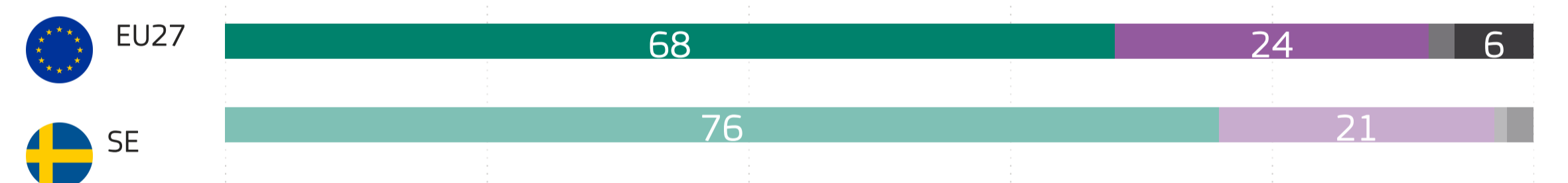
## Further enlargement of the EU to include other countries in future years



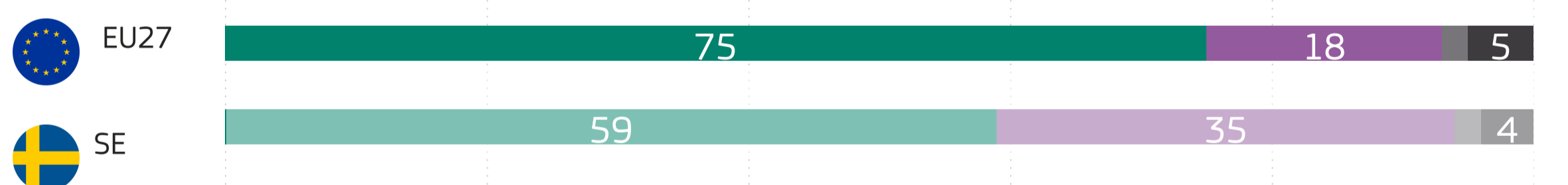
● For ● Against ● Refusal (SPONTANEOUS)/ Don't know

**QB6. And what is your opinion on each of the following statements? Please tell for each statement, whether you are for it or against it. (%)**

## A common European Asylum system



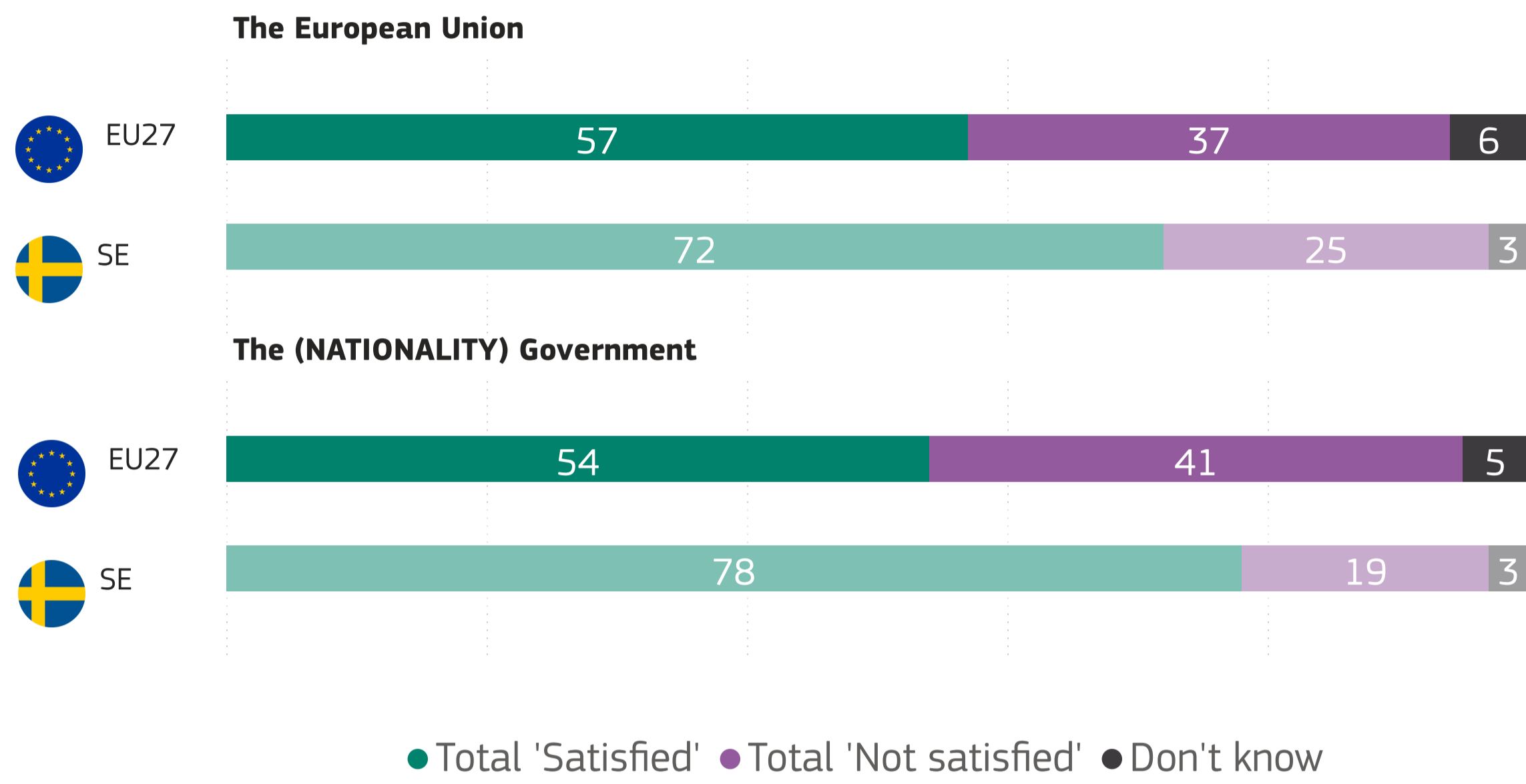
## A reinforcement of EU external borders with more European border guards and coast guards



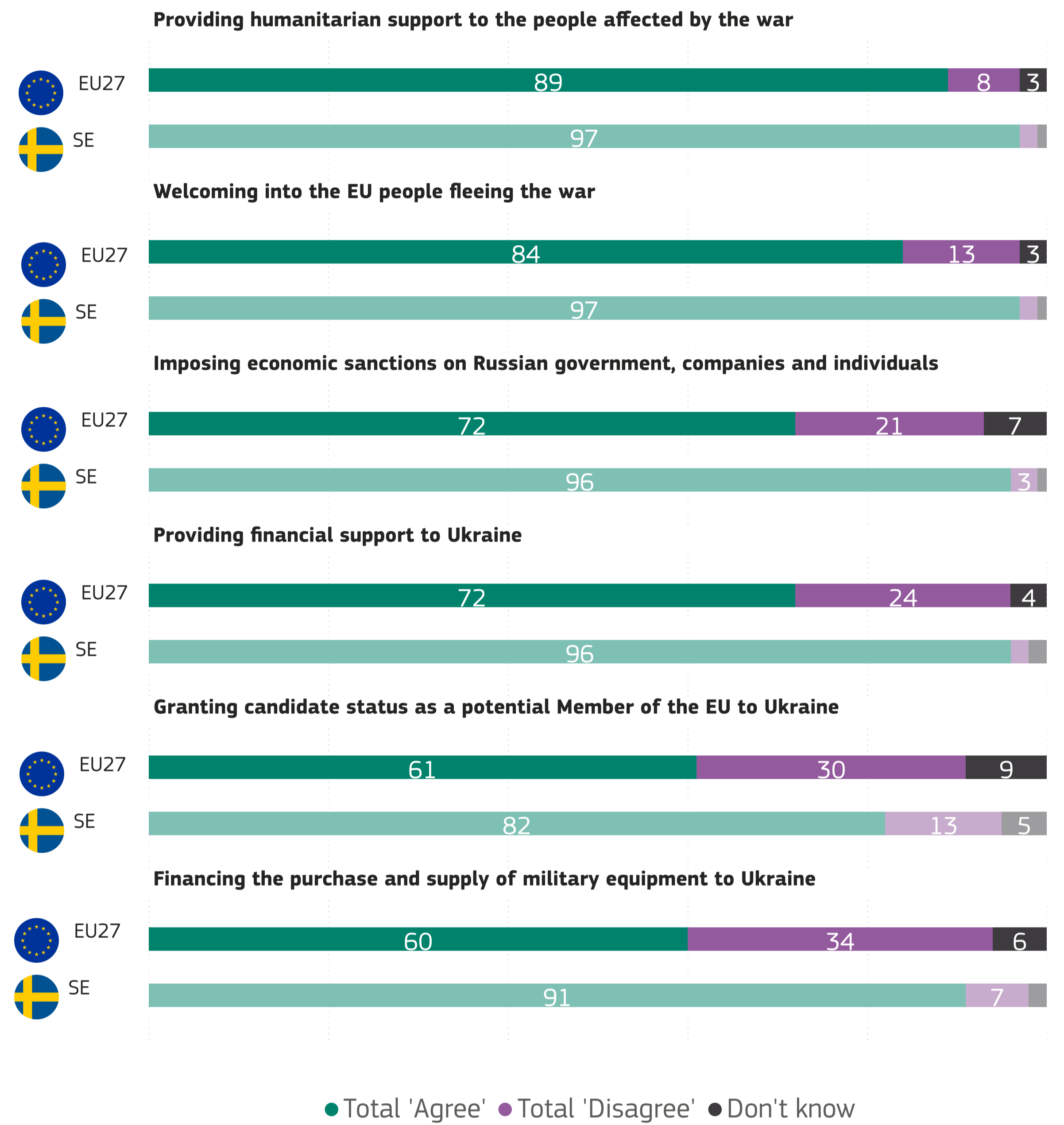
● For ● Against ● Refusal (SPONTANEOUS) ● Don't know

### 3. THE INVASION OF UKRAINE AND ITS CONSEQUENCES

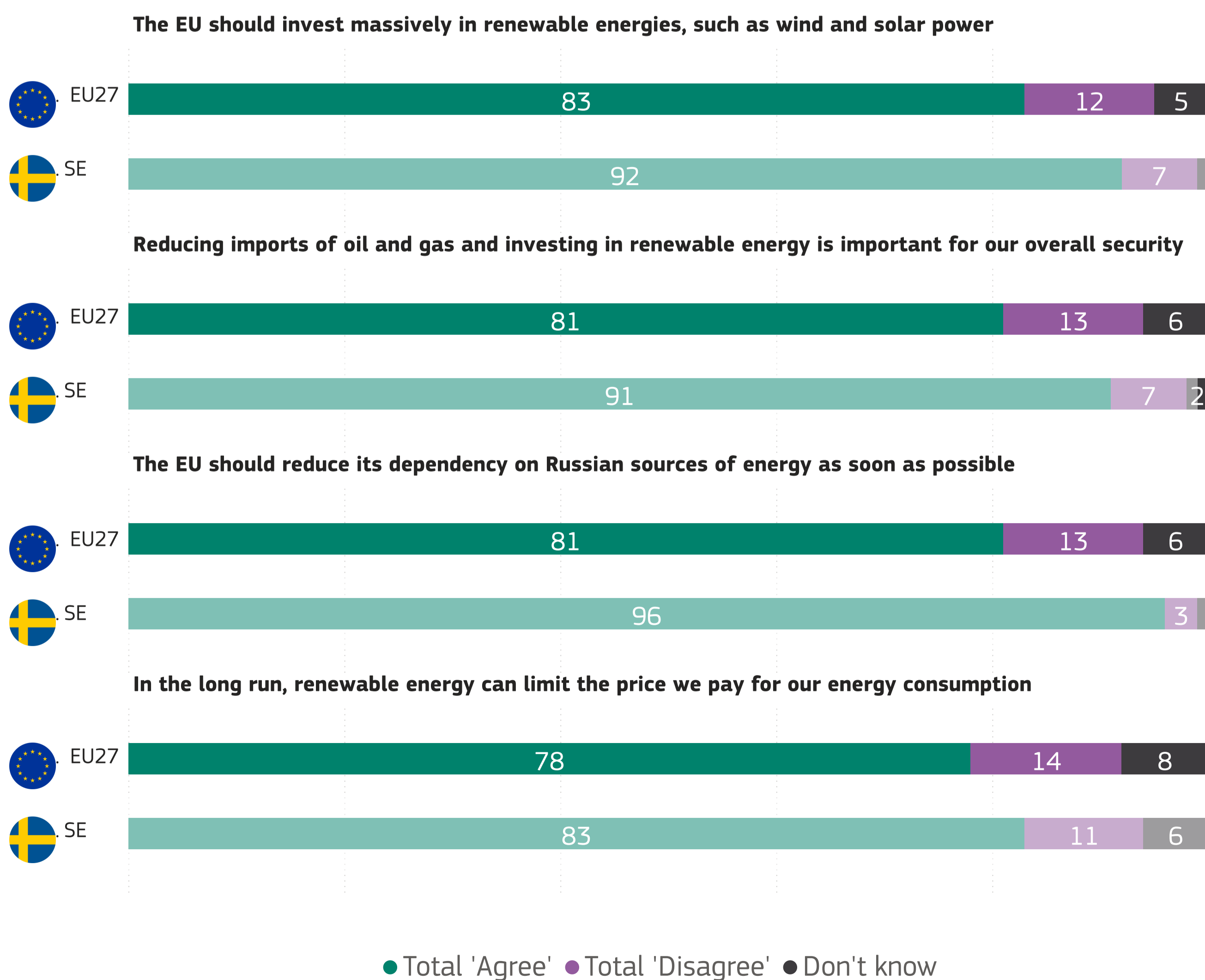
**QD1. In general, how satisfied are you with the response to the Russia's invasion of Ukraine by ...? (%)**



**QD2. The EU has taken a series of actions as a response to Russia's invasion of Ukraine. To what extent you agree or disagree with each of these actions taken. (%)**



**QD3. Please tell to what extent you agree or disagree with each of the following statements. (%)**



### 4. THE EU IN THE WORLD

**QB4. For each of the following statements, do you totally agree, tend to agree, tend to disagree or totally disagree. (%)**

